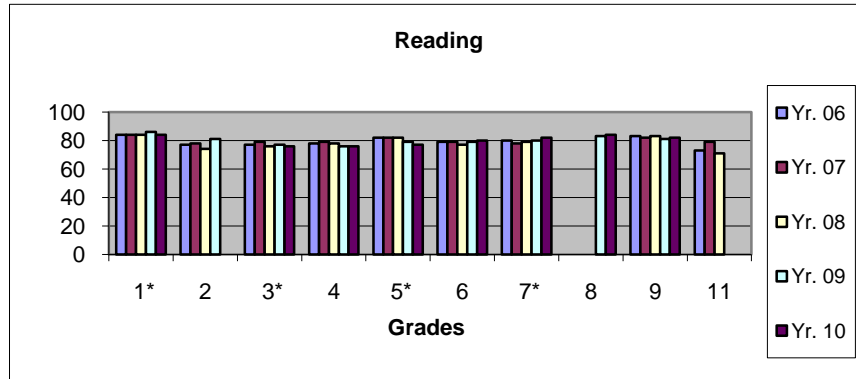


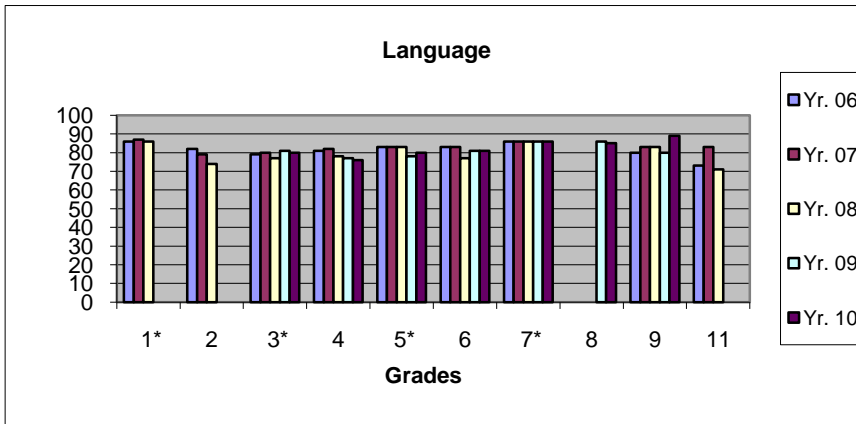
**TerraNova Standardized Testing Diocesan Results  
Spring 2006, 2007, 2008, 2009 and 2010 Percentiles**

Gr. Yr.	# of Students					Gr. Yr.	Reading				
	06	07	08	09	10		06	07	08	09	10
1*	864	902	815	699	693	1*	84	84	84	86	84
2	554	510	535	400		2	77	78	74	81	
3*	901	854	758	786	782	3*	77	79	76	77	76
4	525	558	503	445	488	4	78	79	78	76	76
5*	889	841	813	804	721	5*	82	82	82	79	77
6	433	484	523	495	481	6	79	79	77	79	80
7*	809	778	783	748	734	7*	80	78	79	80	82
8				41	64	8				83	84
9	127	118	87	20	24	9	83	82	83	81	82
11	41	42	20			11	73	79	71		



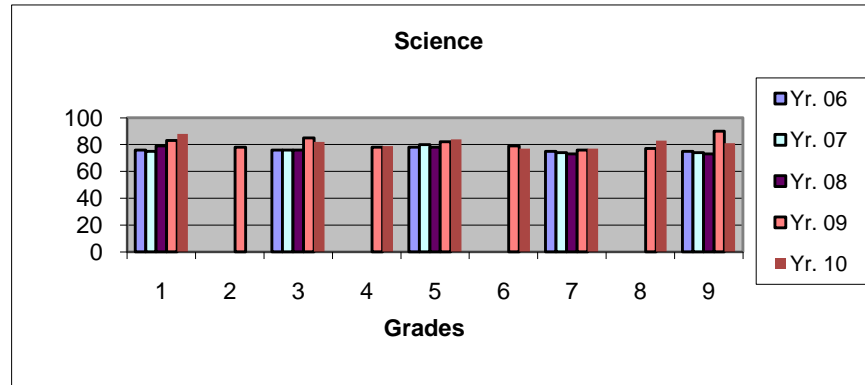
\*Grades 1,3,5, and 7 are all required to take the test.  
Schools chose to have grades, 2, 4, 9 & 11 participate.

Gr. Yr.	# of Students					Gr. Yr.	Language				
	06	07	08	09	10		06	07	08	09	10
1*	864	902	902		693	1*	86	87	86		
2	554	510	510			2	82	79	74		
3*	901	854	758	785	782	3*	79	80	77	81	80
4	525	558	558	444	488	4	81	82	78	77	76
5*	889	841	813	803	721	5*	83	83	83	78	80
6	433	484	484	494	481	6	83	83	77	81	81
7*	809	778	783	748	734	7*	86	86	86	86	86
8				41	64	8				86	85
9	127	118	118	20	24	9	80	83	83	80	89
11	41	42	42			11	73	83	71		



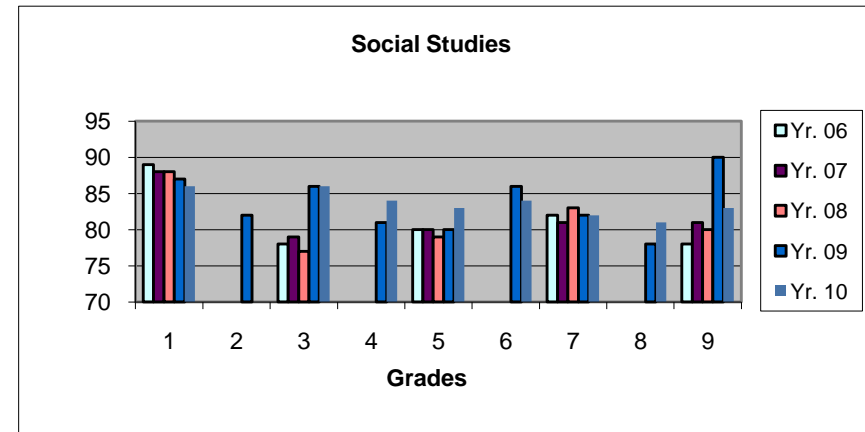
**TerraNova Standardized Testing Diocesan Results  
Spring 2006, 2007, 2008, 2009 & 2010 Percentiles**

Gr. # of Students					Gr. Science						
Yr.	06	07	08	09	10	Yr.	06	07	08	09	10
1*	864	902	815	699	693	1*	76	75	79	83	88
2				379		2				78	
3*	901	854	758	783	782	3*	76	76	76	85	82
4				414	488	4				78	79
5*	889	841	813	803	721	5*	78	80	78	82	84
6				438	481	6				79	77
7*	809	778	783	747	734	7*	75	74	73	76	77
8				42	64	8				77	83
9	809	778	783	20	24	9	75	74	73	90	81



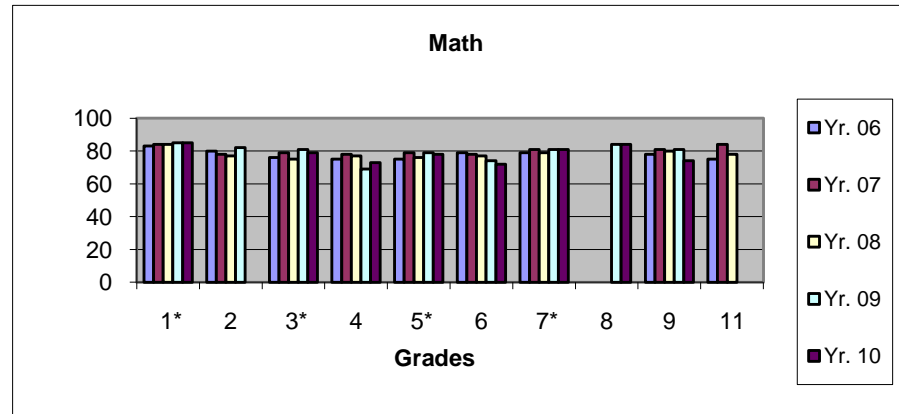
\*Grades 1,3,5,and 7 are all required to take the test. Schools chose to have grades 2,4, and 6 participate.

Gr. # of Students					Gr. Social Studies						
Yr.	06	07	08	09	10	Yr.	06	07	08	09	10
1*	864	902	815	699	693	1*	89	88	88	87	86
2				379		2				82	
3*	901	854	758	781	782	3*	78	79	77	86	86
4				414	488	4				81	84
5*	889	841	813	804	721	5*	80	80	79	80	83
6				437	481	6				86	84
7*	809	778	783	747	734	7*	82	81	83	82	82
8				42	64	8				78	81
9	127	118	87	20	24	9	78	81	80	90	83



**TerraNova Standardized Testing Diocesan Results  
Spring 2006, 2007, 2008, 2009 and 2010 Percentiles**

Gr. # of Students						Gr. Math					
Yr.	06	07	08	09	10	Yr.	06	07	08	09	10
1*	864	902	815	699	693	1*	83	84	84	85	85
2	554	510	535	400		2	80	78	77	82	
3*	901	854	758	786	782	3*	76	79	75	81	79
4	525	558	503	442	488	4	75	78	77	69	73
5*	889	841	813	800	721	5*	75	79	76	79	78
6	433	484	523	496	481	6	79	78	77	74	72
7*	809	778	783	752	734	7*	79	81	79	81	81
8				47	64	8				84	84
9	127	118	87	20	24	9	78	81	80	81	74
11	41	42	20			11	75	84	78		



\*Grades 1,3,5, and 7 are all required to take the test. Schools chose to have grades 2, 4, 6, 9, and 11 participate.

Gr. # of Students						Gr. Total Score					
Yr.	06	07	08	09	10	Yr.	06	07	08	09	10
1*	864	902	815	699	693	1*	86	87	86	92	90
2	554	510	535	400		2	82	80	78	83	
3*	901	854	758	785	782	3*	79	81	77	84	82
4	525	558	503	441	488	4	80	81	79	78	78
5*	889	841	813	800	721	5*	81	82	82	82	82
6	433	484	523	494	481	6	82	81	80	79	81
7*	809	778	783	748	734	7*	83	83	83	86	86
8				41	64	8				86	88
9	127	118	87	20	24	9	82	84	83	85	85
11	41	42	20			11	74	83	78		

