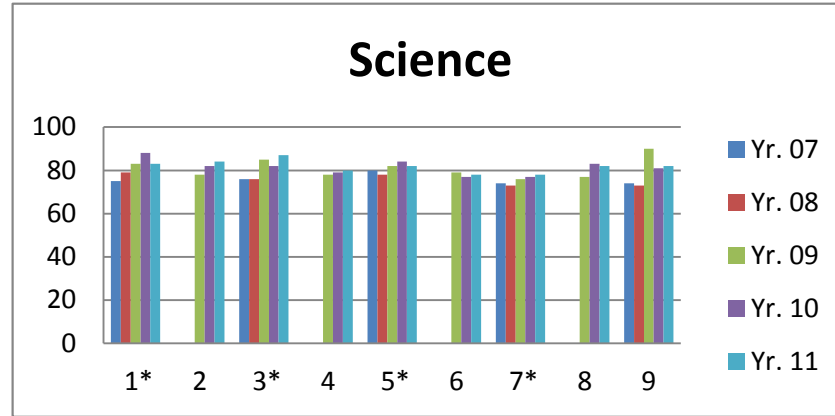


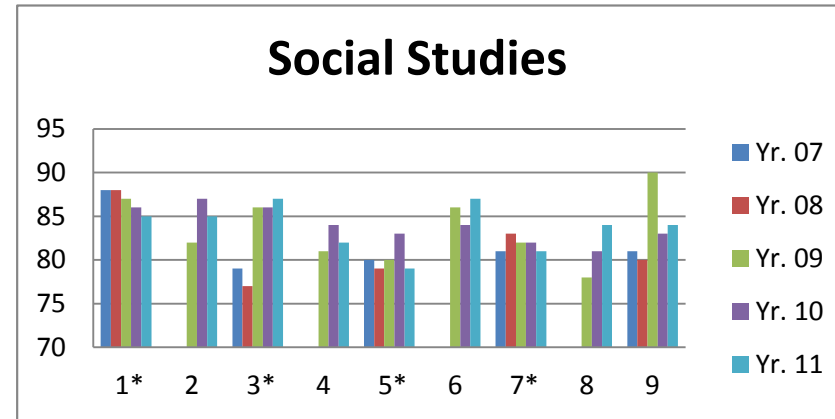
TerraNova Standardized Testing Diocesan Results
Spring 2007, 2008, 2009, 2010 & 2011 Percentiles

Gr. # of Students						Gr. Science					
Yr.	07	08	09	10	11	Yr.	07	08	09	10	11
1*	902	815	699	693	738	1*	75	79	83	88	83
2			379	459	460	2			78	82	84
3*	854	758	783	782	703	3*	76	76	85	82	87
4			414	488	469	4			78	79	80
5*	841	813	803	721	733	5*	80	78	82	84	82
6			438	481	464	6			79	77	78
7*	778	783	747	734	737	7*	74	73	76	77	78
8			42	64	71	8			77	83	82
9	778	783	20	24	27	9	74	73	90	81	82



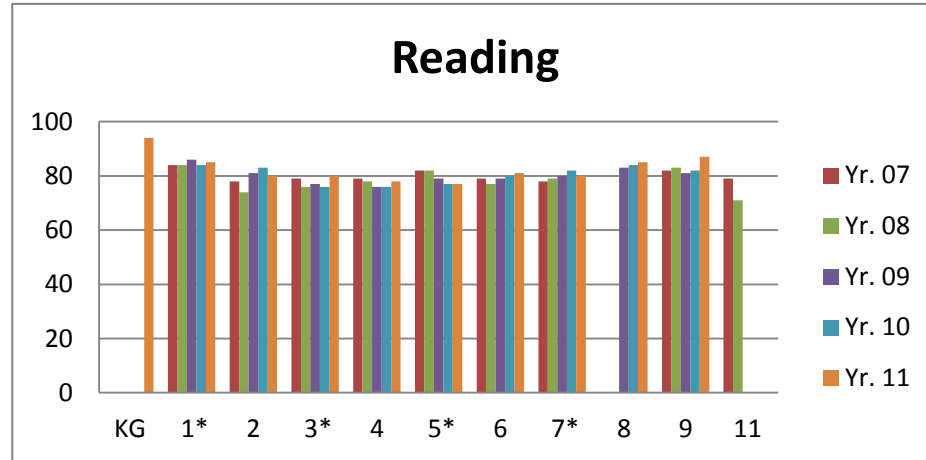
*Grades 1,3,5,and 7 are all required to take the test. Schools chose to have grades 2,4, and 6 participate.

Gr. # of Students						Gr. Social Studies					
Yr.	07	08	09	10	11	Yr.	07	08	09	10	11
1*	902	815	699	693	738	1*	88	88	87	86	85
2			379	459	460	2			82	87	85
3*	854	758	781	782	702	3*	79	77	86	86	87
4			414	488	468	4			81	84	82
5*	841	813	804	721	734	5*	80	79	80	83	79
6			437	481	464	6			86	84	87
7*	778	783	747	734	737	7*	81	83	82	82	81
8			42	64	71	8			78	81	84
9	118	87	20	24	27	9	81	80	90	83	84



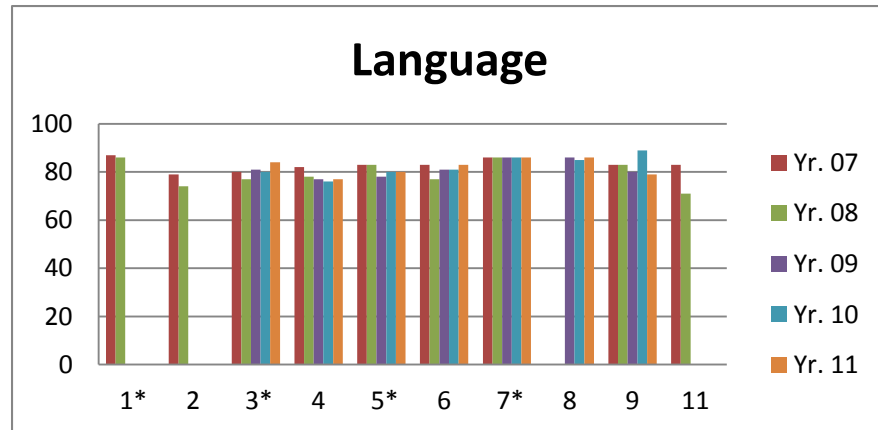
TerraNova Standardized Testing Diocesan Results
Spring 2007, 2008, 2009, 2010 & 2011 Percentiles

Gr. Yr.	# of Students					Gr. Yr.	Reading				
	07	08	09	10	11		07	08	09	10	11
KG					14	KG					94
1*	902	815	699	693	738	1*	84	84	86	84	85
2	510	535	400	459	460	2	78	74	81	83	80
3*	854	758	786	782	704	3*	79	76	77	76	80
4	558	503	445	488	487	4	79	78	76	76	78
5*	841	813	804	721	735	5*	82	82	79	77	77
6	484	523	495	481	464	6	79	77	79	80	81
7*	778	783	748	734	738	7*	78	79	80	82	80
8			41	64	72	8			83	84	85
9	118	87	20	24	27	9	82	83	81	82	87
11	42	20				11	79	71			



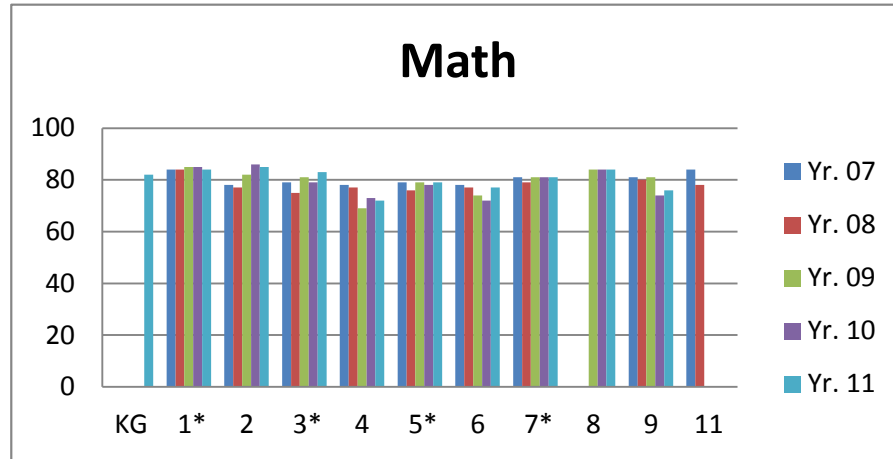
*Grades 1,3,5, and 7 are all required to take the test.
 Schools chose to have grades, 2, 4, 9 & 11 participate.

Gr. Yr.	# of Students					Gr. Yr.	Language				
	07	08	09	10	11		07	08	09	10	11
1*	902	902		693		1*	87	86			
2	510	510		459		2	79	74			
3*	854	758	785	782	704	3*	80	77	81	80	84
4	558	558	444	488	487	4	82	78	77	76	77
5*	841	813	803	721	734	5*	83	83	78	80	80
6	484	484	494	481	464	6	83	77	81	81	83
7*	778	783	748	734	739	7*	86	86	86	86	86
8			41	64	72	8			86	85	86
9	118	118	20	24	27	9	83	83	80	89	79
11	42	42				11	83	71			



TerraNova Standardized Testing Diocesan Results
Spring 2007, 2008, 2009, 2010 & 2011 Percentiles

Gr. # of Students						Gr. Math					
Yr.	07	08	09	10	11	Yr.	07	08	09	10	11
KG					14	KG					82
1*	902	815	699	693	738	1*	84	84	85	85	84
2	510	535	400	459	460	2	78	77	82	86	85
3*	854	758	786	782	704	3*	79	75	81	79	83
4	558	503	442	488	486	4	78	77	69	73	72
5*	841	813	800	721	735	5*	79	76	79	78	79
6	484	523	496	481	464	6	78	77	74	72	77
7*	778	783	752	734	739	7*	81	79	81	81	81
8			47	64	72	8			84	84	84
9	118	87	20	24	27	9	81	80	81	74	76
11	42	20				11	84	78			



*Grades 1,3,5, and 7 are all required to take the test.

Gr. # of Students						Gr. Total Score					
Yr.	07	08	09	10	11	Yr.	07	08	09	10	11
KG					14	KG					92
1*	902	815	699	693	738	1*	87	86	92	90	91
2	510	535	400	459	460	2	80	78	83	85	84
3*	854	758	785	782	704	3*	81	77	84	82	86
4	558	503	441	488	486	4	81	79	78	78	79
5*	841	813	800	721	734	5*	82	82	82	82	82
6	484	523	494	481	464	6	81	80	79	81	83
7*	778	783	748	734	738	7*	83	83	86	86	86
8			41	64	72	8			86	88	89
9	118	87	20	24	27	9	84	83	85	85	80
11	42	20				11	83	78			

