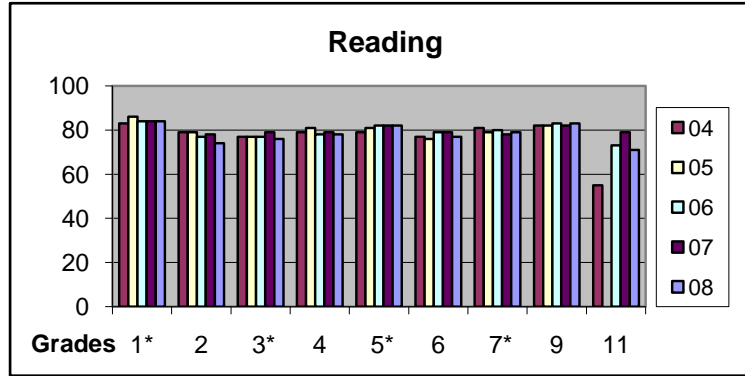


TerraNova Standardized Testing Diocesan Results

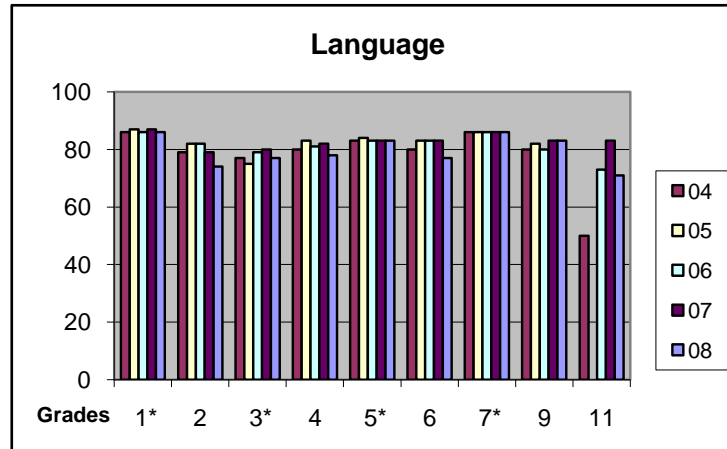
Spring 2004, 2005, 2006, 2007 and 2008 Percentiles

Gr. Yr.	# of Students					Gr. Yr.	Reading				
	04	05	06	07	08		04	05	06	07	08
1*	959	909	864	902	815	1*	83	86	84	84	84
2	491	478	554	510	535	2	79	79	77	78	74
3*	923	897	901	854	758	3*	77	77	77	79	76
4	385	477	525	558	503	4	79	81	78	79	78
5*	883	849	889	841	813	5*	79	81	82	82	82
6	422	437	433	484	523	6	77	76	79	79	77
7*	864	812	809	778	783	7*	81	79	80	78	79
9	138	190	127	118	87	9	82	82	83	82	83
11	17	7	41	42	20	11	55		73	79	71



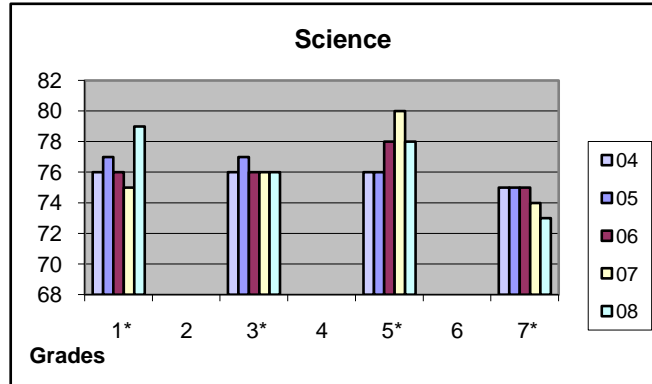
*Grades 1,3,5, and 7 are all required to take the test.
Schools chose to have grades, 2, 4, 9 & 11 participate.

Gr. Yr.	# of Students					Gr. Yr.	Language				
	04	05	06	07	08		04	05	06	07	08
1*	959	909	864	902	902	1*	86	87	86	87	86
2	491	478	554	510	510	2	79	82	82	79	74
3*	923	897	901	854	758	3*	77	75	79	80	77
4	385	477	525	558	558	4	80	83	81	82	78
5*	883	849	889	841	813	5*	83	84	83	83	83
6	422	437	433	484	484	6	80	83	83	83	77
7*	864	812	809	778	783	7*	86	86	86	86	86
9	138	190	127	118	118	9	80	82	80	83	83
11	17	7	41	42	42	11	50		73	83	71



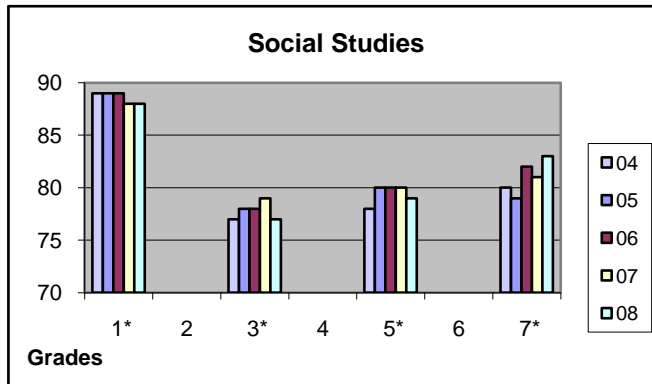
TerraNova Standardized Testing Diocesan Results
Spring 2004, 2005, 2006, 2007 and 2008 Percentiles

Gr. Yr.	# of Students					Gr. Yr.	Science				
	04	05	06	07	08		04	05	06	07	08
1*	959	909	864	902	815	1*	76	77	76	75	79
2						2					
3*	923	896	901	854	758	3*	76	77	76	76	76
4						4					
5*	883	848	889	841	813	5*	76	76	78	80	78
6						6					
7*	864	812	809	778	783	7*	75	75	75	74	73



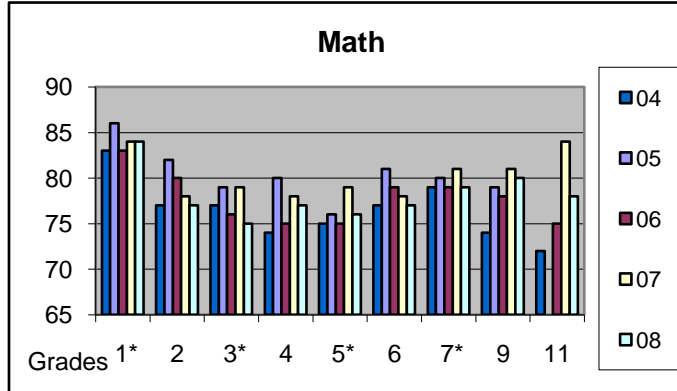
*Grades 1,3,5,and 7 are all required to take the test. Schools chose to have grades 2,4, and 6 participate.

Gr. Yr.	# of Students					Gr. Yr.	Social Studies				
	04	05	06	07	08		04	05	06	07	08
1*	959	908	864	902	815	1*	89	89	89	88	88
2						2					
3*	923	895	901	854	758	3*	77	78	78	79	77
4						4					
5*	883	845	889	841	813	5*	78	80	80	80	79
6						6					
7*	864	812	809	778	783	7*	80	79	82	81	83



TerraNova Standardized Testing Diocesan Results
Spring 2004, 2005, 2006, 2007 and 2008 Percentiles

Gr. Yr.	# of Students					Gr.	Math				
	04	05	06	07	08		04	05	06	07	08
1*	959	909	864	902	815	1*	83	86	83	84	84
2	491		554	510	535	2	77	82	80	78	77
3*	923	896	901	854	758	3*	77	79	76	79	75
4	385	477	525	558	503	4	74	80	75	78	77
5*	883	848	889	841	813	5*	75	76	75	79	76
6	422	437	433	484	523	6	77	81	79	78	77
7*	864	811	809	778	783	7*	79	80	79	81	79
9	138	190	127	118	87	9	74	79	78	81	80
11	17	7	41	42	20	11	72		75	84	78



*Grades 1,3,5, and 7 are all required to take the test.

Schools chose to have grades 2, 4, 6, 9, and 11 participate.

Gr. Yr.	# of Students					Gr.	Total Skills				
	04	05	06	07	08		04	05	06	07	08
1*	959	909	864	902	815	1*	86	88	86	87	86
2	491	478	554	510	535	2	81	83	82	80	78
3*	923	896	901	854	758	3*	78	78	79	81	77
4	385	477	525	558	503	4	79	82	80	81	79
5*	883	848	889	841	813	5*	80	82	81	82	82
6	422	437	433	484	523	6	80	82	82	81	80
7*	864	811	809	778	783	7*	83	82	83	83	83
9	138	189	127	118	87	9	80	84	82	84	83
11	17		41	42	20	11	58		74	83	78

